



HIGHWAY DEPARTMENT

*Scott M. Schmidt, PE, PLS,
Chief Public Works Officer*

900 Lang Street
West Bend, WI 53090
(262) 335-4435
FAX (262) 335-4439

**For Immediate Publication
PRESS RELEASE – 7/2/25**

COUNTY HIGHWAY H – PAVEMENT REPAIR

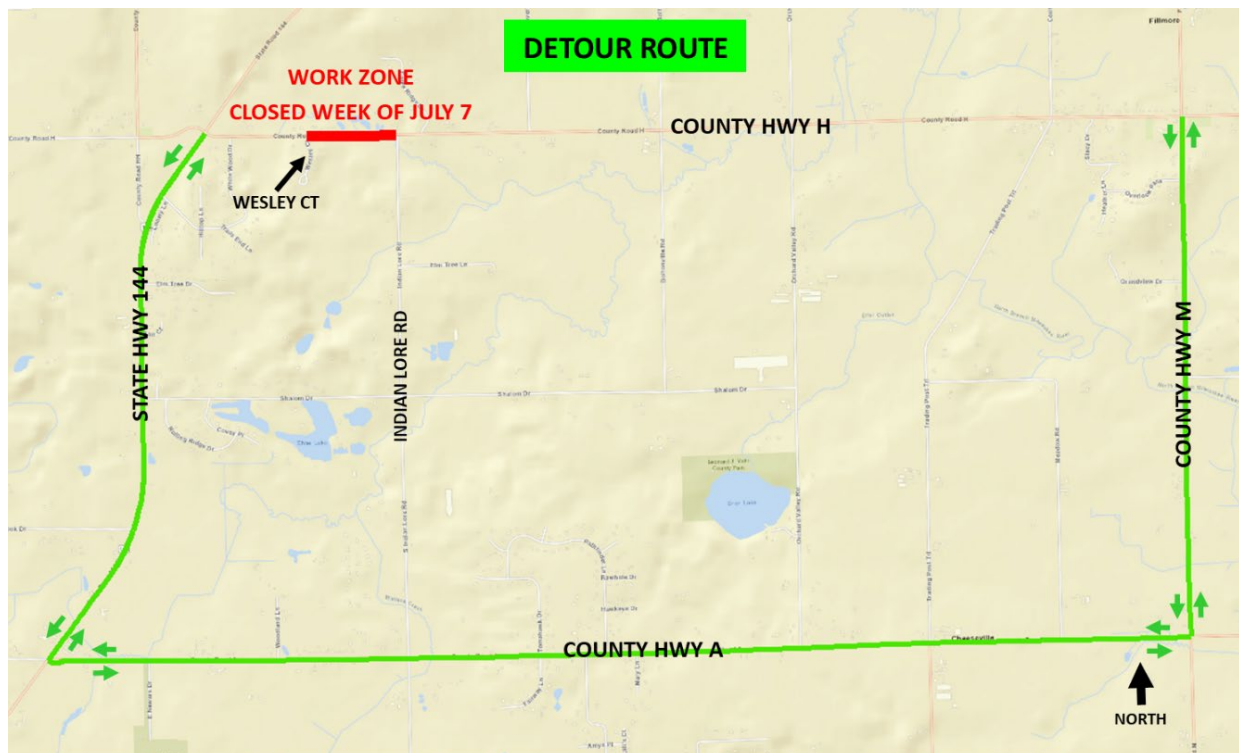
WEST BEND, WI - The Washington County Highway Department will be repairing the depression on County Highway H east of State Highway 144 between the intersections of Wesley Court and Indian Lore Road in the Town of Farmington. The road will be closed during the week of July 7, 2025, and a detour route will be posted diverting traffic around the project area. The schedule is dependent on weather and other factors.

After raising the depressed area of roadway, an initial layer of asphalt (binder course) will be installed and left for a minimum of 60 days to allow for initial settlement. The pavement will be ramped at each end during this 60-day period, and the roadway will be open to traffic during this time. A final layer of asphalt (surface course) will be applied after the 60-day settlement period to bring the surface of the roadway to proper elevation.

Thank you for your patience and extra caution as we improve and maintain Washington County's roadways striving for effective mobility and reliable infrastructure.

For more information or if you have any questions about this news release, please call the Washington County Highway Department at 262-335-4435.

CTH H DEPRESSION REPAIR PROJECT AREA & DETOUR ROUTE



###